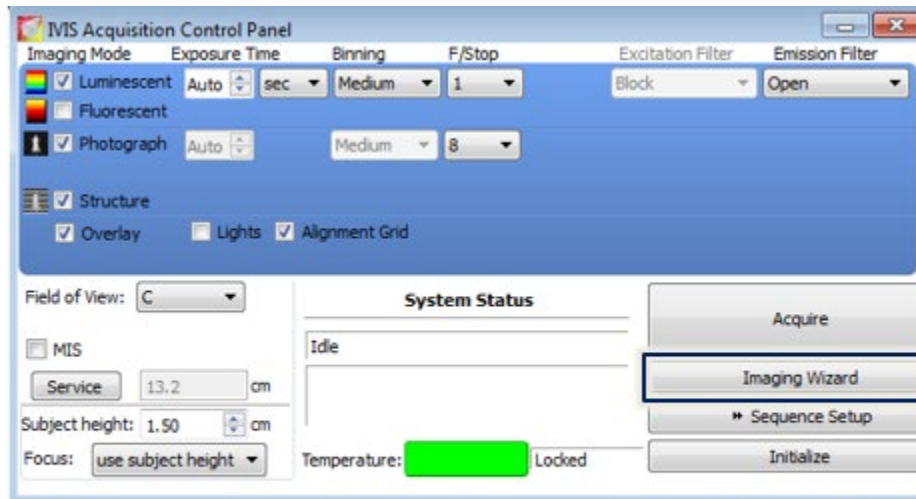


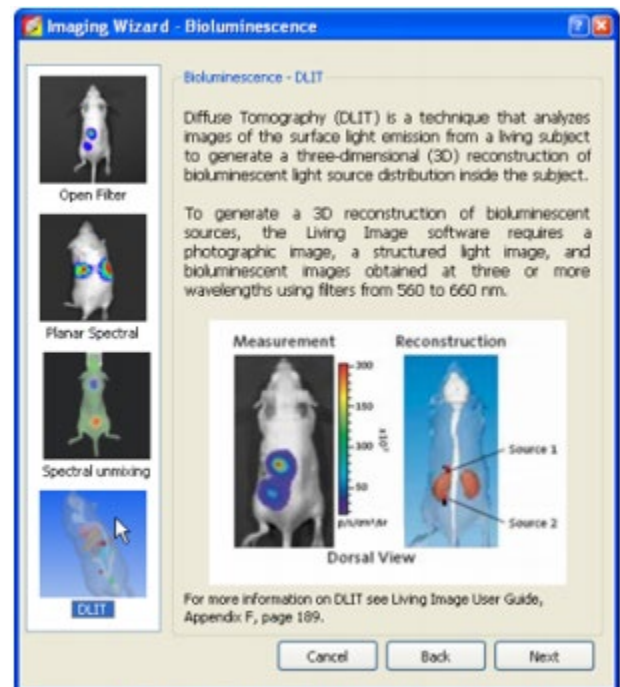
3D Bioluminescence Imaging (IVIS Spectrum)



IVIS Spectrum control panel provides the image acquisition functions. The Imaging Wizard button is used to set up a DLIT sequence for 3D luminescence imaging.

Image Setup

1. Initialize Living Image Software.
2. Wait until camera temperature box turns green (~ 7 min). The default temperature is 37°C
3. Open chamber and make sure black plastic mat is in place or use a sheet of black Artagain paper instead.
4. Block off all but one port in the IVIS anesthesia manifold inside imaging chamber.
5. Set up DLIT (Diffuse Luminescence Imaging Tomography) sequence using the imaging wizard. (Restart wizard if necessary.)
 - a. Choose Bioluminescence; Next.
 - b. Choose DLIT; Next
 - c. Choose type of bioluminescence (probably firefly)
 - d. Imaging subject > Mouse (Do not check MIS)
 - e. Choose field of view
6. Set everything else as default.



DLIT Image sequence option for 3D bioluminescence imaging

Image Acquisition

1. Induce mouse in anesthesia box
2. Inject mouse with luciferin.
3. Start timer if you are comparing mice.
4. Direct anesthesia flow to imaging chamber and organize mouse with nose in anesthesia tube. Wait ~5 min. (Note that if you are comparing mice, this timing must be the same between animals.)
5. Acquire sequence.