

Using Differential Interference Contrast, DIC (u880)

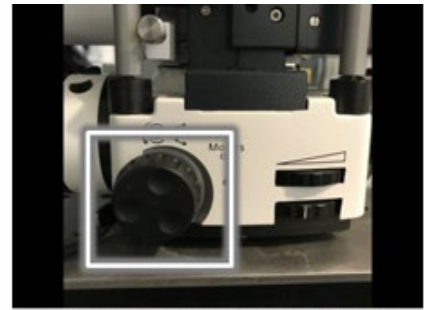
Setup

1. Set sample on stage.
Use an objective suitable for DIC (10x/0.45W or 20x/1.0W)
2. In Locate tab, switch on brightfield (Transmitted light) illumination. Focus sample.
3. Adjust microscope for proper Köhler illumination.
4. Set the condenser revolving disk to DIC II.
5. For 10x/0.45W: insert DIC slider in the slot provided on the adapter.

For 20x/1.0W: insert DIC slider Senarmont (W-PA 20x) into the opening provided for it in the objective turret. Put the ball head screwdriver (SW 3.0) into the recess in the DIC slider and push the DIC slider into the slot until it locks in place.



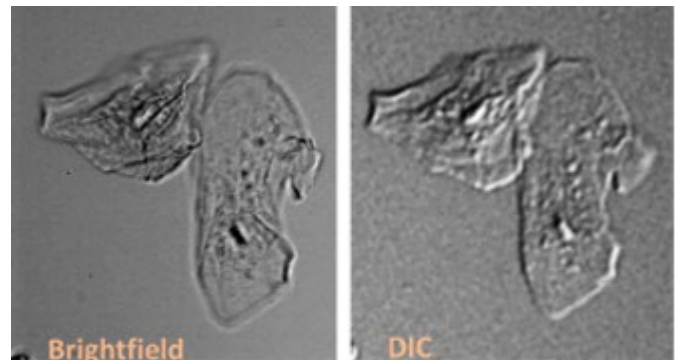
Condenser revolving disk



Polarizer Adjustment Thumb Wheel

Acquisition

1. Switch to Acquisition mode with light path set to use one of the confocal lasers and the T-PMT detector.
2. Start Live.
3. Adjust contrast by turning the polarizer using the thumb wheel at the front of the microscope.
4. Adjust Channel D Gain settings to optimize image brightness.



Sample images of cheek cells acquired with Brightfield (left) and DIC (right)

When done

1. Pull out DIC slider used and store in designated box/drawer.
2. Return condenser revolving disk to BF position.